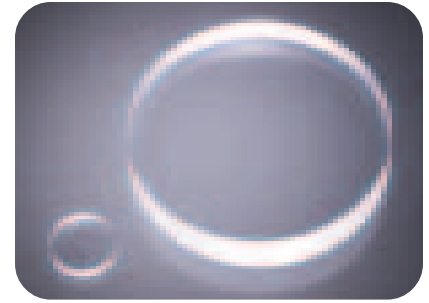


Uncoated Laser-Grade Mirror Substrates



- **Laser-grade**
- **Coatings also available**

These substrates are intended to be coated for use as laser mirrors, but they may be used for any type of mirror. The substrate surfaces are polished to laser quality and are available in flat or concave spherical shapes. To order a coated mirror simply append the appropriate coating suffix to the substrate catalog number.

Uncoated Flat Laser-grade Mirror Substrates

Diameter, Ø (mm)	Thickness, t (mm)	Fused Silica	
		Catalog Number	Price US
5.0	3.0	45-0197	\$36.00
10.0	6.0	45-0205	\$42.00
12.7	6.0	45-0213	\$42.00
15.0	6.0	45-0221	\$42.00
19.1	6.0	45-0239	\$51.00
20.0	6.0	45-0247	\$51.00
25.0	6.0	45-0254	\$62.00
25.4	6.0	45-0262	\$62.00
30.0	6.0	45-0270	\$76.00
38.1	10.0	45-0288	\$89.00
40.0	10.0	45-0296	\$89.00
50.0	10.0	45-0304	\$115.00
50.8	10.0	45-0312	\$115.00

Specifications

Material:

Flat Substrates: Fused silica
 Concave Spherical Substrates: BK7

Diameter Tolerance: +0 -0.2 mm

Thickness Tolerance: +0 -0.2 mm

Flat Substrates: +0 -0.2 mm
 Concave Spherical Substrates: ±0.5 mm

Parallelism:

Flat Substrates: <30 arc sec

Clear Aperture: 90% diameter

Flatness: $\lambda/10$

Surface Quality: 10-5

Edges: Fine ground

Uncoated

Uncoated Concave Spherical Laser-grade Mirror Substrates

Catalog Number	Diameter, Ø (mm)	Radius of Curvature (mm)	Thickness, t (mm)	Price US
45-1773	12.7	50	9.5	\$80.00
45-1781	12.7	100	9.5	\$80.00
45-1799	12.7	200	9.5	\$80.00
45-1807	12.7	500	9.5	\$80.00
45-1815	12.7	1000	9.5	\$80.00
45-1823	12.7	2000	9.5	\$80.00
45-1716	25.4	50	9.5	\$105.00
45-1724	25.4	100	9.5	\$105.00
45-1732	25.4	200	9.5	\$105.00
45-1740	25.4	500	9.5	\$105.00
45-1757	25.4	1000	9.5	\$105.00
45-1765	25.4	2000	9.5	\$105.00

Silicon Mirror Substrates

Specifications:

Material: Silicon

Diameter Tolerance: +0 -0.2 mm

Thickness Tolerance: ±0.2 mm

Flatness: $\lambda/4$ at 633nm

Surface Quality: 40-20

Rear Surface: commercial polish

Silicon Substrates

Catalog Number	Diameter, Ø (mm)	Thickness, t (mm)	Price US
45-1831	12.7	2.3	\$32.00
45-1849	15.0	2.3	\$42.00
45-1856	19.05	2.5	\$53.00
45-1864	25.4	3.0	\$63.00
45-1872	27.9	3.0	\$74.00
45-1880	38.1	4.0	\$84.00